

☒ Show thumbnails in outline

## Abstract

## Keywords

## 1. Introduction

## 2. Methods

## 2.1. Environmental setting



Table 1

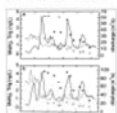
## 2.2. Precipitation and streamflow, summer 2002



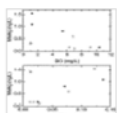
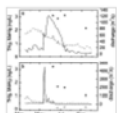
## 2.3. Sampling and analytical procedures

## 3. Results and discussion

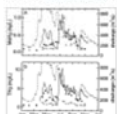
## 3.1. The Elk and Rum rivers



## 3.2. Roseau river



## 3.3. Mississippi river at Anoka



## 4. Conclusions

## Acknowledgements

## References



## Science of The Total Environment

Volume 368, Issue 1, 1 September 2006, Pages 138–148

Selected papers from the 7th International Conference on Mercury as a Global Pollutant,  
Ljubljana, Slovenia June 27 - July 2, 2004

## Elevated methylmercury concentrations and loadings during flooding in Minnesota rivers

Steven J. Balogh<sup>a</sup>, Edward B. Swain<sup>b</sup>, Yabing H. Nollert<sup>a</sup><sup>a</sup> Metropolitan Council Environmental Services, 2400 Childs Road, St. Paul, MN 55106-6724, USA<sup>b</sup> Minnesota Pollution Control Agency, 520 Lafayette Road, St. Paul, MN 55155-4194, USA<http://dx.doi.org/10.1016/j.scitotenv.2005.09.045>, How to Cite or Link Using DOI  
Permissions & Reprints

View full text

Purchase \$41.95

Rent the full-text  
article on DeepDyve

- ▶ For just \$3.99
- ▶ 24 hour access
- ▶ Read-only
- ▶ Non-printable

## Abstract

Previous studies have identified flooded landscapes (e.g., wetlands, impoundments) as sites of elevated methylmercury (MeHg) production. Here we report MeHg and total Hg (THg) concentrations and mass loadings in rivers in Minnesota during major flooding episodes in the summer of 2002. Frequent intense precipitation events throughout the summer resulted in extraordinarily wet conditions in east-central and northwestern Minnesota. Streamflow remained at record-setting high levels in many rivers and streams in these regions for several weeks. We observed high concentrations of MeHg ( $> 1.4$  ng/L) accompanied by high MeHg/THg ratios (0.39 to 0.50) in the Roseau River in northwestern Minnesota and in the Elk and Rum Rivers in east-central Minnesota. Very high MeHg mass loadings were observed in the Mississippi River just upstream of Minneapolis on July 17 (51 g MeHg/day) and July 23 (42 g MeHg/day), when MeHg concentrations at this site were 0.89 and 0.99 ng/L, respectively. The elevated MeHg concentrations in the Roseau River were associated with low dissolved oxygen and high dissolved reactive phosphorus concentrations, both of which are characteristic of anoxic waters. These rivers drain landscapes containing varying amounts of wetlands, and some of the MeHg discharged is thought to have been flushed from anoxic wetland soils. In addition, the flooding of vast areas of normally dry land surfaces probably also resulted in increased MeHg production, adding to the quantities of MeHg exported from these watersheds. Changing climate patterns are expected to result in more frequent heavy precipitation and flooding events in Minnesota. Our results suggest that as flooding and wet conditions in this region increase, the production of MeHg and its export from terrestrial areas to surface waters will increase also.

## Keywords

Methylmercury; Mississippi; River; Flood; Minnesota

## Figures and tables from this article:



Fig. 1. Map of Minnesota showing the location of the sampling sites, indicated by an open circle, ○.

Figure options

## Bibliographic information

## Citing and related articles

This article belongs to a :

Selected papers from the  
Conference on Mercury  
Pollutant, Ljubljana, Slo  
July 2, 2004

Edited By John Munthe, Nives

Other articles from this sj

Atmospheric mercury in  
Torunn Berg, Eirik Fjeld, E  
▶ Show more informationAtmospheric gaseous m  
Tien-Ho Kuo, Cheng-Fen C  
▶ Show more informationAdvancing the mercury  
John Munthe, Nives Ogrinc  
▶ Show more information

View more articles »

Applications and tools

Workspace